



Photoelectric Sensor PS-R Series

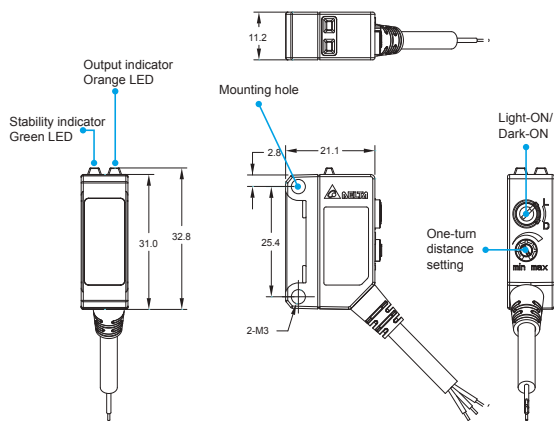
- ▶ Different range adjustment (Trimmer or TEACH)
- ▶ M3 mounting hole, easy to assemble
- ▶ IP67 and CE certification
- ▶ Electrical circuit protection



Appearance	Sensing Method	Sensing Distance	NPN	PNP / Push Pull	Connection
 Rectangular Type (Trimmer)	Small Spot Reflect	100 mm	PS-RS1-NS12	PS-RS1-PS12	2M cable (3 wires)
	Diffuse Reflect	300 mm	PS-RR3-NS12	PS-RR3-PS12	2M cable (3 wires)
		1 M	PS-RR9-NS12	PS-RR9-PS12	
	Retro-Reflect	4.2 M	PS-RL4-NS12	PS-RL4-PS12	2M cable (3 wires)
Through Beam	12 M	PS-RT9-NS12	PS-RT9-PS12	2M cable (3 wires)	
 Rectangular Type (TEACH)	Small Spot Reflect	100 mm	PS-RS1-NS22	PS-RS1-US22	2M cable (4 wires)
			PS-RS1-NS2B	PS-RS1-US2B	M8 Connector
	Diffuse Reflect	300 mm	PS-RR3-NS22	PS-RR3-US22	2M cable (4 wires)
			PS-RR3-NS2B	PS-RR3-US2B	M8 connector
		1 M	PS-RR9-NS22	PS-RR9-US22	2M cable (4 wires)
			PS-RR9-NS2B	PS-RR9-US2B	M8 connector
	Retro-Reflect	4.2 M	PS-RL4-NS22	PS-RL4-US22	2M cable (4 wires)
			PS-RL4-NS2B	PS-RL4-US2B	M8 connector
Through Beam	5M (Fixed)	PS-RT5-NSB2	PS-RT5-USB2	2M cable (4 wires)	
		PS-RT5-NSBB	PS-RT5-USBB	M8 connector	

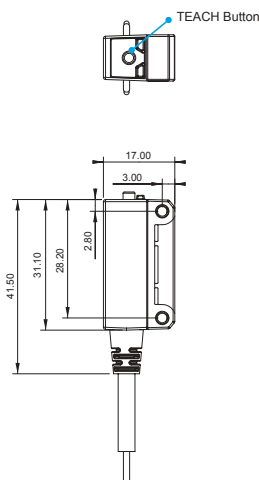
Dimensions Unit : mm

• Trimmer



• TEACH

Cable Type



Connector Type

